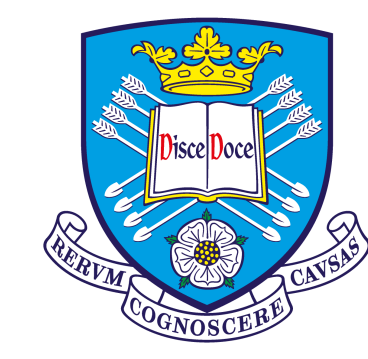




# Impact of Covid-19 on Children's Language, Educational and Socio-emotional Skills



The University Of Sheffield.



## ICICLES

Impact of Covid-19 on Children's Language, Education and Socio-emotional Skills

We have now concluded the first year of the ICICLES project and we would like to update you on what we've been working on and what our next steps are.

## What have we been working on?

Last year all participating schools assessed children using a language and a socio-emotional measure once in Spring 2022 (first testing point) and once in Summer 2022 (second testing point).

### Measures

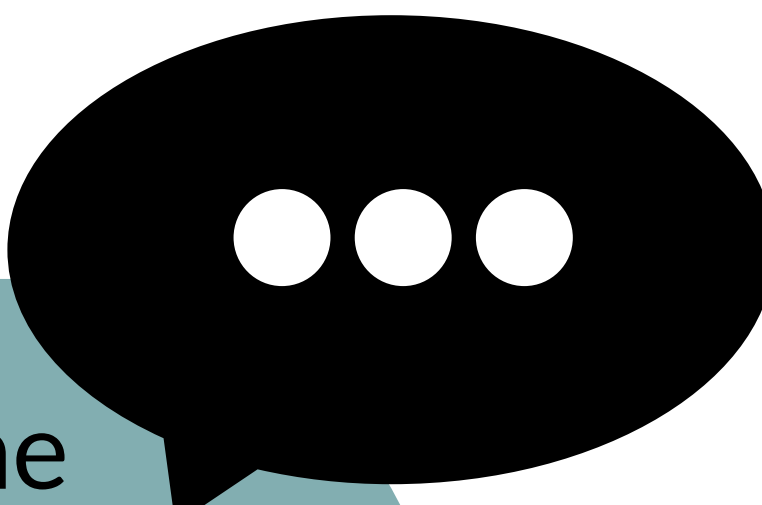
**Language Screen:** This is a language assessment that focuses on four specific areas: expressive and receptive vocabulary, listening comprehension and sentence repetition.

**Strengths and Difficulties Questionnaires:** This questionnaire is a measure used to assess socio-emotional well-being.

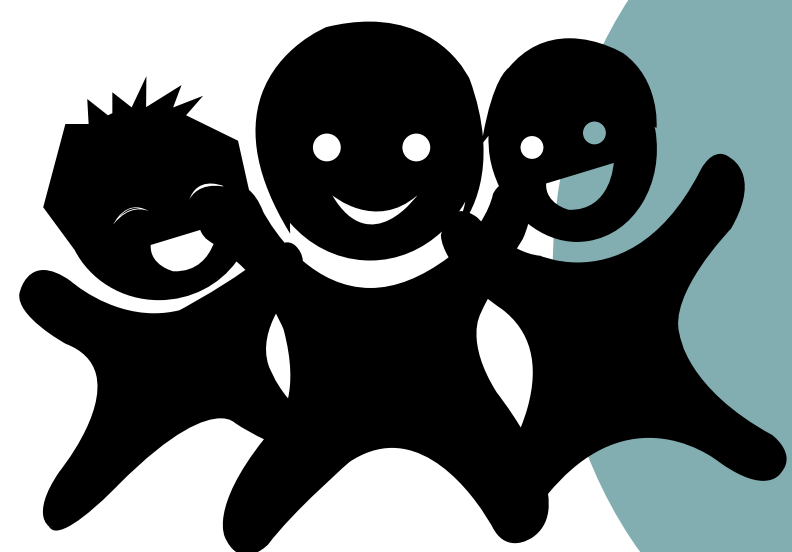
Please note that all data was collected for research purposes. We cannot provide scores for individual children and the information below represents the outcomes across all year groups and all participating schools.

## First testing point - Spring 2022

During the first testing point, schools completed **627 language assessments** and **704 socio-emotional questionnaires**.



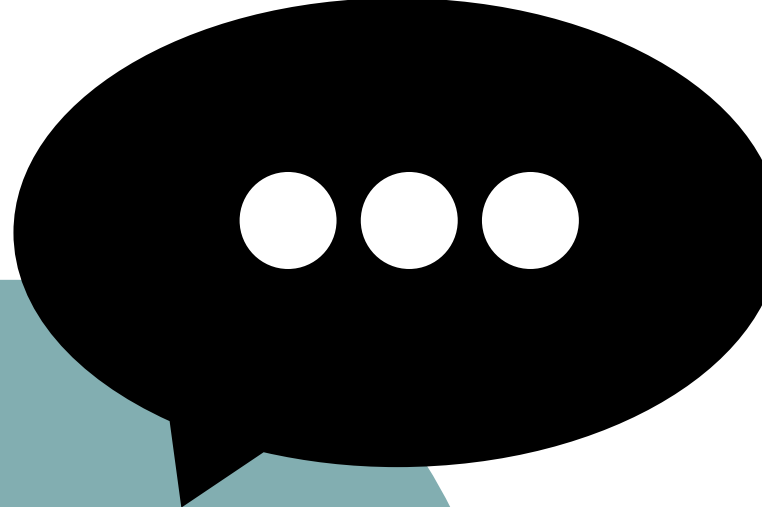
**Language Screen:** Our preliminary findings show that the language skills of **91.25%** of all participating children were in the expected range during the first testing point. While this language measure suggests that most children are performing in the expected range, it may not pick up on difficulties children may have with their broader communication skills.



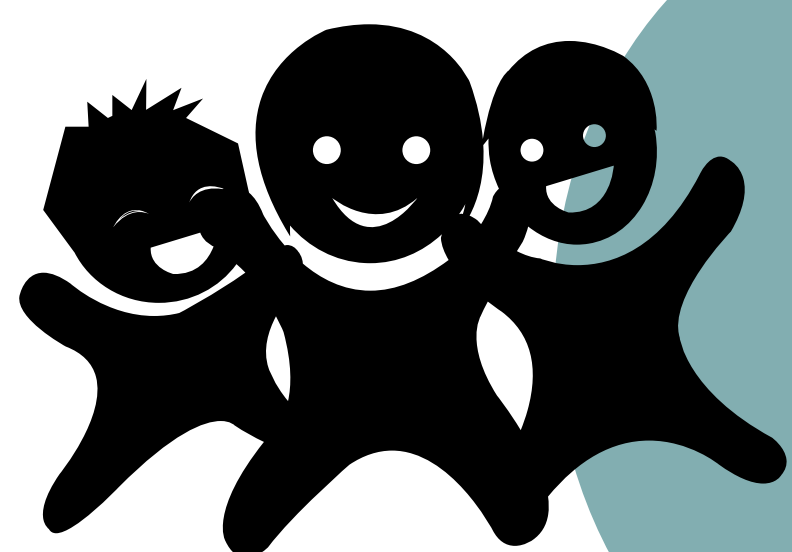
**Strengths and Difficulties Questionnaires:** Our preliminary findings show that during the first testing point **70.40%** of all participating children were scoring in the average range.

## Second testing point - Summer 2022

During the second testing point, schools completed **694 language assessments** and **564 socio-emotional questionnaires**.



**Language Screen:** Similarly to testing point 1, our preliminary findings show that the language skills of **94.09%** of all participating children in summer 2022 were in the expected range. While this language measure suggests that most children are performing in the expected range, it may not pick up on difficulties children may have with their broader communication skills.



**Strengths and Difficulties Questionnaires:** Our preliminary findings show that during the summer of 2022 the percentage of children scoring in the average range increased to **82.62%**.

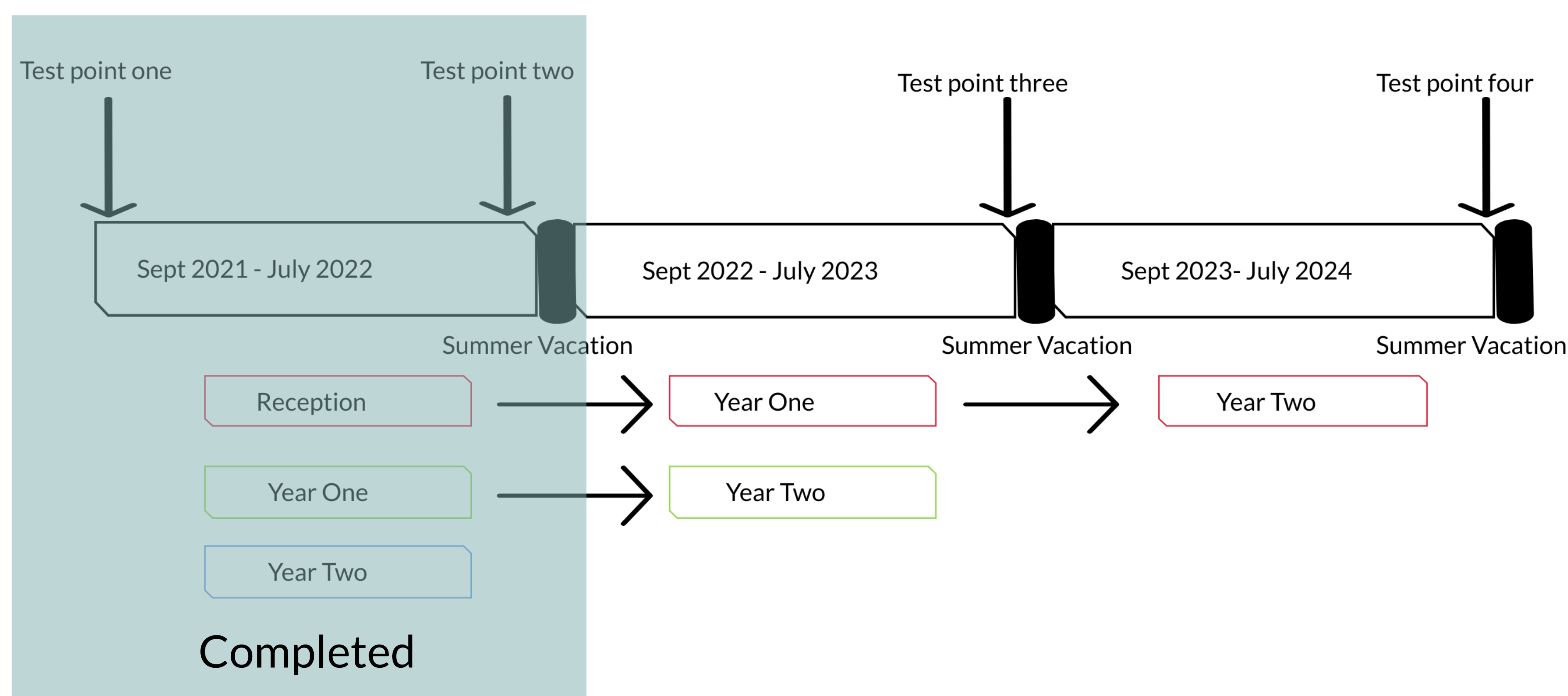
# Next steps

We are now starting the second year of the ICICLES project.

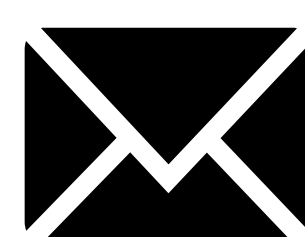
The third testing point will start in spring 2023. Schools will be asked to complete an online survey and a language and a socio-emotional assessment with all participating children.

We will also ask you to complete an online survey. We will contact you with more information regarding this survey in spring 2023.

See below for a timeline of the project.



If you have any questions or would like more information about the project, please contact us by email or Twitter using the information below



[ICICLES@niesr.ac.uk](mailto:ICICLES@niesr.ac.uk)



[@ICICLES\\_project](https://twitter.com/ICICLES_project)

This project has been funded by

